

In The Direction Of Colour

An exhibition by Fels and Staffordshire Street

Staffordshire Street Studios
49 Staffordshire Street
Peckham
London
SE15 5TJ

21st *July* >>> 31st *July*

Fels and Staffordshire Street Studios presents In The Direction Of Colour - a group exhibition celebrating the exploration and application of colour within contemporary design in London. In an old Methodist hall on Staffordshire Street, Peckham, the exhibition features works from 13 London-based designers and studios who acknowledge colour from different perspectives. Be it a central tenet to their practice as a whole or a specifically informed project, varying approaches to materiality, process and finishing are exhibited as a colourful reflection of London's vibrant design community.

Artwork list

Andu Masebo



Union chair

Waxed ash, powder-coated steel
brackets
850 x 420 x 500mm

£900 + VAT

An exercise in limitations; the union chair is produced from a single plank of wood. In an attempt to reduce the material wasted during the processes of its production, the design is a negotiation between an archetypal form of a chair and the machining processes used to produce it. The positive cut of each piece makes for the negative of another. Creating a jigsaw puzzle of components that eventually get reassembled in the form of a chair.



Spare Parts side table

Ash, lacquered steel
470 x 330 x 290 mm

£600 + VAT



Bethan Laura Wood



Daybed

From Mono Mania Mexico collection
510 x 780 x 780 mm (with cushion)

Enquire for sales

Bethan's trips to Mexico were her first taste of Latin America's hot palette of colour and pattern; that sensory experience distilled into an obsession with the stained-glass windows of the New Basilica of Our Lady of Guadalupe in Mexico City. As a conduit for exploring this new palette, Bethan's interpretation of this amazing building has led to a series of works that subtly reference the craft of embroidery from traditional Otomi textiles.



Mania Circus Mashup stool

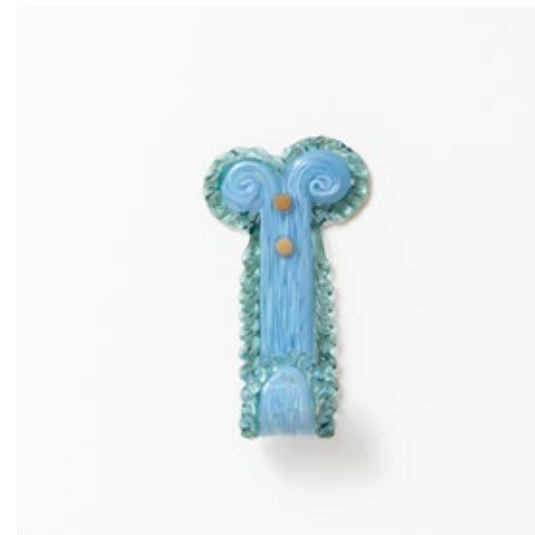
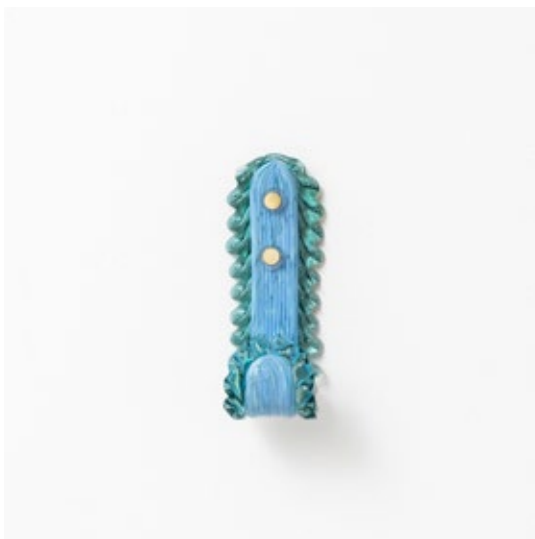
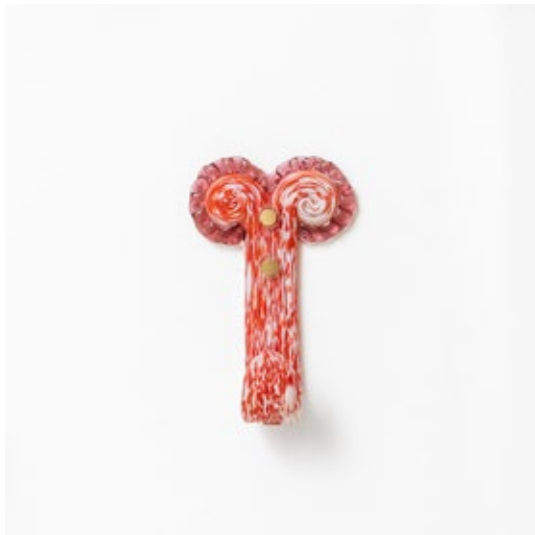
Collaboration between Bethan Laura Wood and Martino Gamper
500 x 400 x 380 mm

£1250 + VAT

Frilly XXX Hooks

Murano glass
Fabricated in Murano ITALY
Sizes vary

£300 + VAT each



Charlotte Kingsnorth



Fuzzy Hilbreed chair

Foam, faux fur, repaired chair frame
850 x 450 x 480 mm

Not for sale

Made from a found pre-existing timber chair frame, enveloped in foam and hand stitched textile. The Hilbreed series explores the personification of inanimate objects and the connection this can bring between a person and their belongings.

Jaclyn Pappalardo



Meta stool, 3-legged

Pine wood, upholstery foam, and
bouclè wool fabric.
490 x 470 x 360mm

£2200 + VAT

Meta is a metamorphosis from one object to another. The stool uses an interlocking system that joins the sections together, making it a modular and interchangeable product based on the user's choice of colours.

The stool can be extended into a 4-part, 5-part and so forth, in order to create a never ending piece. This stool comes in a monochromatic green bouclè colour fabric.



m2 stool

Ply wood, upholstery foam, and
bute wool

490 x 520 x 480 mm

£2000 + VAT

Part of the 'Meta collection' - a series of products that adopts the same linear pattern and design concept.

The stool is constructed from separate segments that can be added or removed, enabling the piece to become never-ending. This particular design explores the possibilities of curves.

Jan Hendzel Studio



Mirror

London Plane, Chestnut, Glass

860 x 440 x 670 mm

£3325 + VAT

Both Mirror and Coffee Table play with the notion of textural and tonal contrasts, while exploring intuitive methods of creating stone inspired forms from timber. The hand of the maker can be found throughout in a series of textural interventions that are intended to enhance both visual and physical interaction with the objects.

A hand scalloped London Plane surround gives depth, shadow and texture to a central mirror encased in soft blue chestnut ring.



Coffee table

English Ash, Pitch Pine
890 x 1140 x 480 mm

£3275 + vat

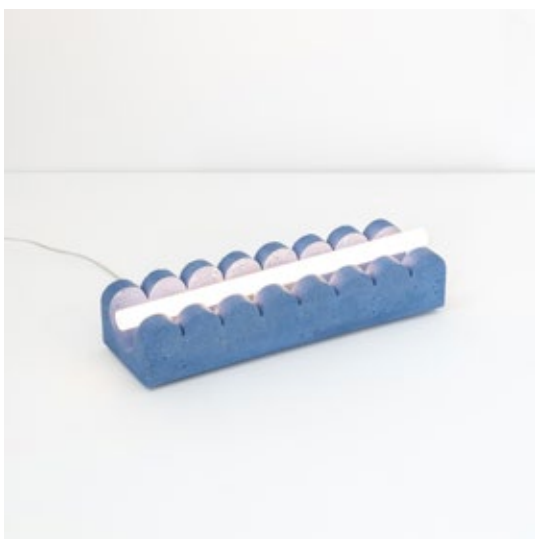
Lewis Kemmenoe



Cantilever chair (blue)

Birch ply and sapele
690 x 570 x 550 mm

£1000 + vat



Wave light

Blue pigment concrete with
architectural bulb
150 x 490 x 100 mm

£717 + vat

LS GOMMA



ISSA Vase [Red]

PU Rubber / Metal Mesh / Pigments
300 x 400 x 200 mm

£400.00 + VAT



Nite Lite [Red]

PU Rubber / Metal Mesh / Pigments
/ Steel / Red Light Fixture
320 x 500 x 450 mm

Edition of 10 + 1AP

£950 + VAT



Teenage Lamp [Red]

Rubber sprayed Aluminium shade,
Red light fixture, CMYK print on
painted aluminium
780 x 320 x 320 mm

Edition of 10 + 2 AP

£2500 + VAT



Butter stools

Polyurethane resin, pigments

Available in pink, yellow and blue

£300 + VAT



Jello chair

UV resistant polyurethane resin,
pigments

740 x 520 x 350 mm

£1666 + VAT



Jello side table

UV resistant polyurethane resin,
pigments

280 x 280 x 400 mm

£542 + VAT

Jello stool

UV resistant polyurethane resin,
pigments
340 x 340 x 400 mm

£667 + VAT



Named after the iconic gelatine pudding, Jello is a landscape of unique objects, each crafted as a single copy - irreproducible in series - due its particular mode of production. Interested in “hacking” industrial processes, Marco Campardo has sought to adapt rotational moulding, one of the most common processes in mass production of affordable goods, to a lo-fi system that does not require the making of expensive and complicated moulds from silicone or plaster.

Philippe Malouin

I-beam pedestal table

Steel
400 x 400 x 350 mm

£3500 + VAT



Studio Furthermore



Lacuna lamp (purple)

blown glass, aluminum, copper,
cable

590 x 290 x 290 mm

£5100 + VAT



Lacuna lamp (white)

blown glass, aluminum, copper,
cable

590 x 290 x 290 mm

£5100 + VAT

Lacuna ‘an empty space or void’ is both the name given and concept within this work. Lacuna is a voluminous hollow of mouth blown glass illuminated from above by a chip on board type LED. A single molded form becomes stand, shade, insulator and reflector to a paired down electric circuit. Each piece is individually blown into a form giving wood mold by a master glass blower in the Czech Republic. The craft process renders each lamp unique.



Space Lava

powder coated aluminium
220 x 490 x 150 mm

£2120 + VAT

A collection of one-off works created from Studio Furthermore's lost foam aluminium process and coloured in a selection of volatile colours.

Space Lava is the result of an adaptation to the studio's metal process so that 100% recycled alloy sourced from car wheels becomes the sole feed material and no virgin metal is required.

Rio Kobayashi



Mikadosan chair

Ash painted in acrylic colours and
varnished
820 x 460 x 560 mm

£2000 + VAT

Inspired by the famous table game Mikado, also known as pick-up sticks, the slim looking structures mirror the fragile balance of the game whilst maintaining strength and function through expert craftsmanship.



Mikadosama Desk

Ash painted in acrylic colours and varnished

740 x 595 x 1200 mm

£3800 + VAT

Theodora Alfredsdottir & Tino Seubert



Corrugation Lights - double sconce

255 x 393 x 202 mm

Stained ash and aluminium

£2080 + VAT

Corrugation is a collection of lights inspired by mid-century furniture making, honouring the technique of veneer forming. It consists of a scalable hanging light and wall sconces, which can serve as building blocks to create unique combinations playfully spanning across whole rooms. The collection takes veneer forming as a starting point - a process that requires skilled craftsmanship, which was introduced to the furniture world by design names like Alvar Aalto and the Eames couple - and pairs it with off-the-shelf aluminium tubes. A snug fit where the hard powder coated metal meets the soft wavy wood and gives the piece a pleasant contrast a pleasant contrast. The linear light and the wall pieces can be cut to length to fit any space and work harmoniously with their surroundings.

Tino Seubert



Anodised wicker stool

Anodised aluminium, woven rush
380 x 430 x 450

£1325 + VAT



Cable rug - small yellow

3 core PVC electricity cable 100m,
cable ties, male and female US plug
790 x 740 mm

£2750 + VAT



Grow Up planter

Anodised aluminium
670mm x 760mm

£5000 + VAT

In collaboration with MCQ and Santa Barbara-based aluminium manufacturer, Neal Feay, aluminium was anodised by hand in colours and a tie-dye inspired by the GROW UP collection and rolled and bolted into its circular shape.

Please direct all sales enquiries to
Finbar Conran or Oscar Mitchell:

contact@fels.world